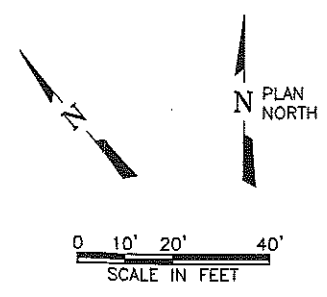
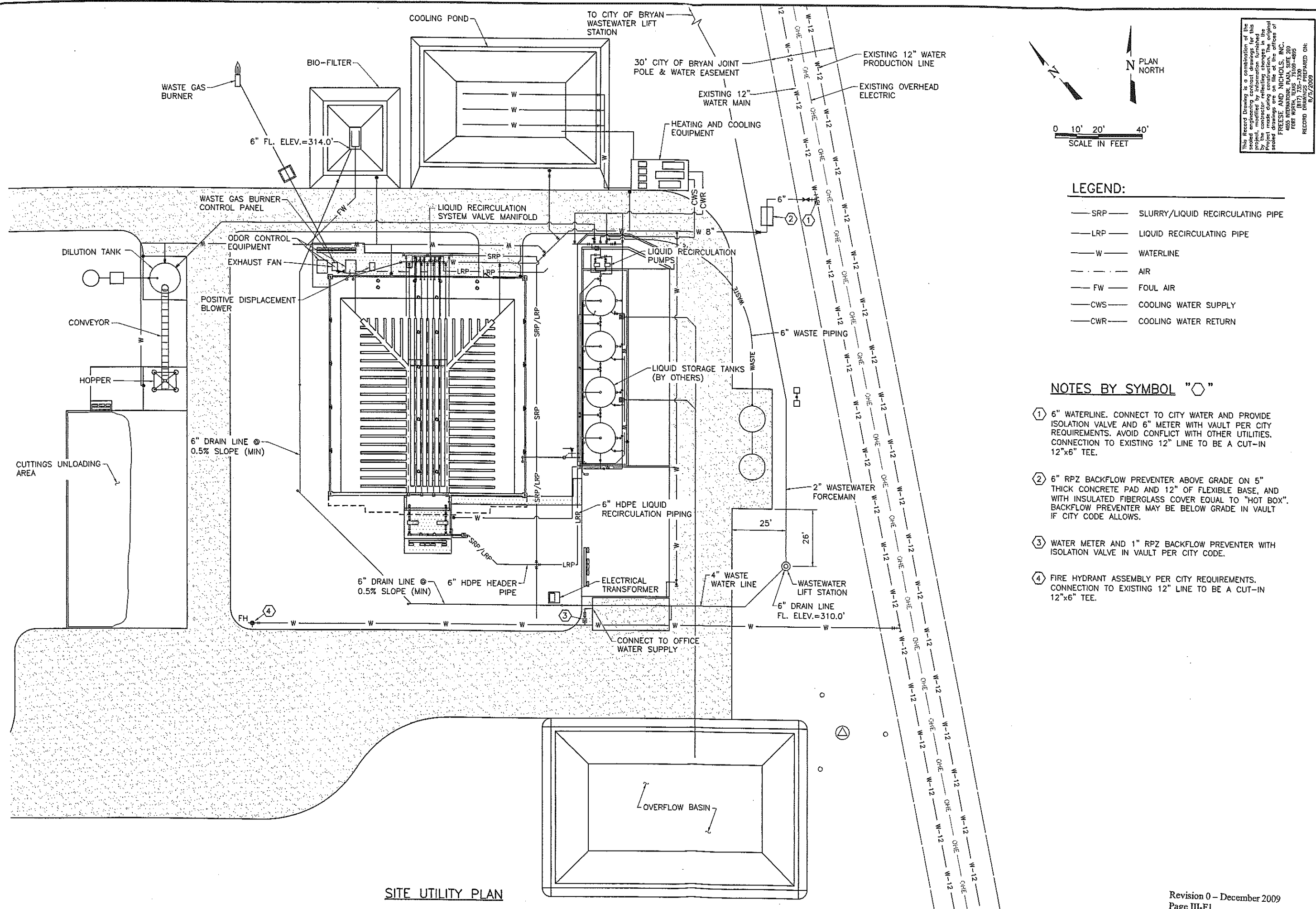
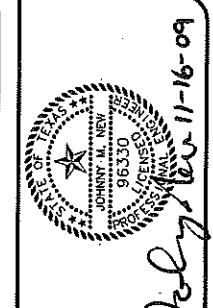


User: CAL  
 (TRB07370) (AUSTIN) (PL-PIPING) (DWG) LAYOUT: Layout1  
 DATE: MAY 08 2008 11:23:27  
 LTS: 1.00  
 PSLTS: 1  
 TWIST: 40.0  
 N:\V\F\BASE\CV-TRB-PL-BASE\_NA\F\BASE\CV-TRB-PL-PI-ENDEASE\_and\_NA\STANDARD\34BORDE



This Record Drawing is a combination of the original drawing and the changes indicated by the contractor reflecting changes in the project. It is the responsibility of the contractor to verify the accuracy of the original drawing and the changes indicated by the contractor. FRIESE AND NICHOLS, INC. 4055 INTERNATIONAL PLAZA, SUITE 200 FORT WORTH, TEXAS 76109-4895 (817) 735-7300 RECORD DRAWING 8/23/2009



- LEGEND:**
- SRP — SLURRY/LIQUID RECIRCULATING PIPE
  - LRP — LIQUID RECIRCULATING PIPE
  - W — WATERLINE
  - - - AIR
  - - - FW — FOUL AIR
  - CWS — COOLING WATER SUPPLY
  - CWR — COOLING WATER RETURN

- NOTES BY SYMBOL "O"**
- ① 6" WATERLINE. CONNECT TO CITY WATER AND PROVIDE ISOLATION VALVE AND 6" METER WITH VAULT PER CITY REQUIREMENTS. AVOID CONFLICT WITH OTHER UTILITIES. CONNECTION TO EXISTING 12" LINE TO BE A CUT-IN 12"x6" TEE.
  - ② 6" RPZ BACKFLOW PREVENTER ABOVE GRADE ON 5" THICK CONCRETE PAD AND 12" OF FLEXIBLE BASE, AND WITH INSULATED FIBERGLASS COVER EQUAL TO "HOT BOX". BACKFLOW PREVENTER MAY BE BELOW GRADE IN VAULT IF CITY CODE ALLOWS.
  - ③ WATER METER AND 1" RPZ BACKFLOW PREVENTER WITH ISOLATION VALVE IN VAULT PER CITY CODE.
  - ④ FIRE HYDRANT ASSEMBLY PER CITY REQUIREMENTS. CONNECTION TO EXISTING 12" LINE TO BE A CUT-IN 12"x6" TEE.

**SITE UTILITY PLAN**

**FRIESE AND NICHOLS**  
 4040 Broadway Street, Suite 600  
 San Antonio, Texas 78209-6350  
 Phone: (210) 298-3000  
 Fax: (210) 298-3001

TERRABON, LLC  
**MIX ALCO BIOMASS PILOTRATION FACILITY**  
 SITE UTILITY PLAN

NO.	ISSUE	DATE	BY	APP. JOB NO.	TRB07370
	DESIGNED	MAY 2008	TEV		
	CHECKED		TEV		
	REVISION		CJE/CTP		
	CHECKED		CJE/CTP		
	FILE NAME				
	CV-TRB-PL-PIPING.dwg				

Bar is one inch on original drawing, if not one inch on this sheet, adjust scale.  
 VERIFY SCALE